

# EASTERN & SOUTHERN AFRICA REGIONAL PROFILE

Investing in the future, JRS responds to the needs of displaced people in **Eastern & Southern Africa Region**.

## OUR MISSION

Accompany, serve and advocate for forcibly displaced people to heal, learn and determine their own future.



### ACCOMPANY

Walking with the displaced people



### SERVE

Responding with compassion



### ADVOCATE

Defending the rights and dignity of the displaced people



## OUR AREAS OF IMPACT



EDUCATION



MHPSS /  
PROTECTION



LIVELIHOODS &  
ECONOMIC INCLUSION



RECONCILIATION &  
& PEACEBUILDING



PASTORAL  
CARE



ADVOCACY



[www.jrs.net/en/where-we-work/eastern-and-southern-africa](http://www.jrs.net/en/where-we-work/eastern-and-southern-africa)



# WHO WE ARE

## OVERVIEW

The Jesuit Refugee Service (JRS) is an International Catholic Organisation founded in 1980 by the Society of Jesus as a practical and spiritual response to the suffering displaced people. It started as a response of the suffering that **Fr. Pedro Arrupe, SJ, then Superior General of the Society of Jesus**, witnessed from the refugees that were fleeing the Vietnam War. He then decided to mobilise human and financial resources of the Society of Jesus to offer relief and accompaniment to these people.

JRS began its work in Africa in 1982 with its second global project in Ethiopia, responding to humanitarian crisis at the time. This marked the establishment of the first JRS region on the African continent. In 2025, the Eastern Africa Region and the Southern Africa Region were merged to form the present day Eastern and Southern Africa Region (ESAR) and becoming one of JRS's longest-standing humanitarian regions.

The presence of JRS in ESAR, steers as part of the Society of Jesus the mission to accompany, serve, and advocate the cause of forcibly displaced people, that they may heal, learn, and determine their own future in community. The region's programming focuses on Education, Economic Inclusion and Livelihoods, Mental Health and Psychosocial Support (MHPSS), Protection, Reconciliation and Pastoral work. These priorities, promotes dignity, resilience, and meaningful participation among displaced populations.

## VISION

A world where forcibly displaced people can obtain protection, opportunity, and participation in sustainable, just, and reconciled communities.

## MISSION

Inspired by the generous love and example of Jesus Christ, the Jesuit Refugee Service (JRS) as a global apostolate of the Society of Jesus, seeks to accompany, serve and advocate the cause of forcibly displaced people, that they may heal, learn, and determine their own future in community.

# WHERE WE ARE

## PROJECT LOCATIONS

JRS Eastern and Southern Africa Operates in 9 Countries

### JRS EASTERN AND SOUTHERN AFRICA

Country office  
Regional office  
Nairobi, Kenya

### JRS KENYA

Country office  
Nairobi  
Projects:  
Nairobi Urban project  
Kakuma Refugee Camp

### JRS SOUTH SUDAN

Country office  
Juba  
Projects:  
Renk Refugee Site  
Maban Refugee Camp  
Yambio Refugee Camp

### JRS BURUNDI/TANZANIA

Country office  
Bujumbura (Burundi)  
Projects:  
Bujumbura urban setting  
Makamba Refugee Camp  
Muyinga Refugee Camp  
Ruyigi Refugee Camp  
Kibondo Refugee Camp (Tanzania)

### JRS ETHIOPIA

Country office  
Addis Ababa  
Projects:  
Refugee Community Center (Addis Ababa)  
Child Protection Center (Addis Ababa)  
Dollo Ado Refugee Camp

### JRS UGANDA

Country office  
Kampala  
Projects:  
Kampala Urban project  
Adjumani Settlement

### JRS MOZAMBIQUE

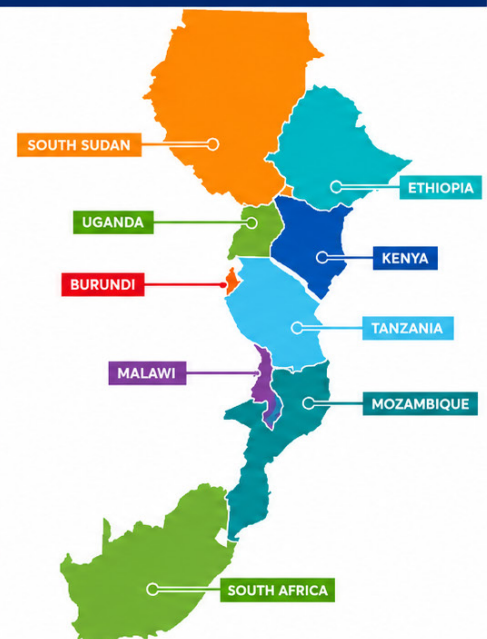
Country office  
Chiure  
Projects:  
Maningane Settlement  
Marupa Settlement

### JRS MALAWI

Country office  
Lilongwe  
Projects:  
Dzaleka Refugee camp

### JRS SOUTH AFRICA

Country office Johannesburg  
Projects:  
Johannesburg, Gauteng province



# REGIONAL CONTEXT

## FORCED DISPLACEMENT TREND

### EASTERN AND SOUTHERN AFRICA REGION

IS HOME TO  
**5,100,592**  
REFUGEES AND ASYLUM SEEKERS

**4,796,027**  
REGISTERED INTERNALLY  
DISPLACED PEOPLE IN THE REGION

#### CURRENT CONTEXT



##### SUDAN WAR:

forced displacement generating many refugees and internally displaced people.



##### BURUNDI REPATRIATION:

refugees are being repatriated back to Burundi from Tanzania.



##### DRC CONFLICT:

ongoing armed conflict in the eastern DRC continues to drive mass displacement, humanitarian needs and regional instability.



##### ORGANIZED ARMED GROUPS IN MOZAMBIQUE:

Insurgency in Cabo Delgado Province is generating mass displacement.



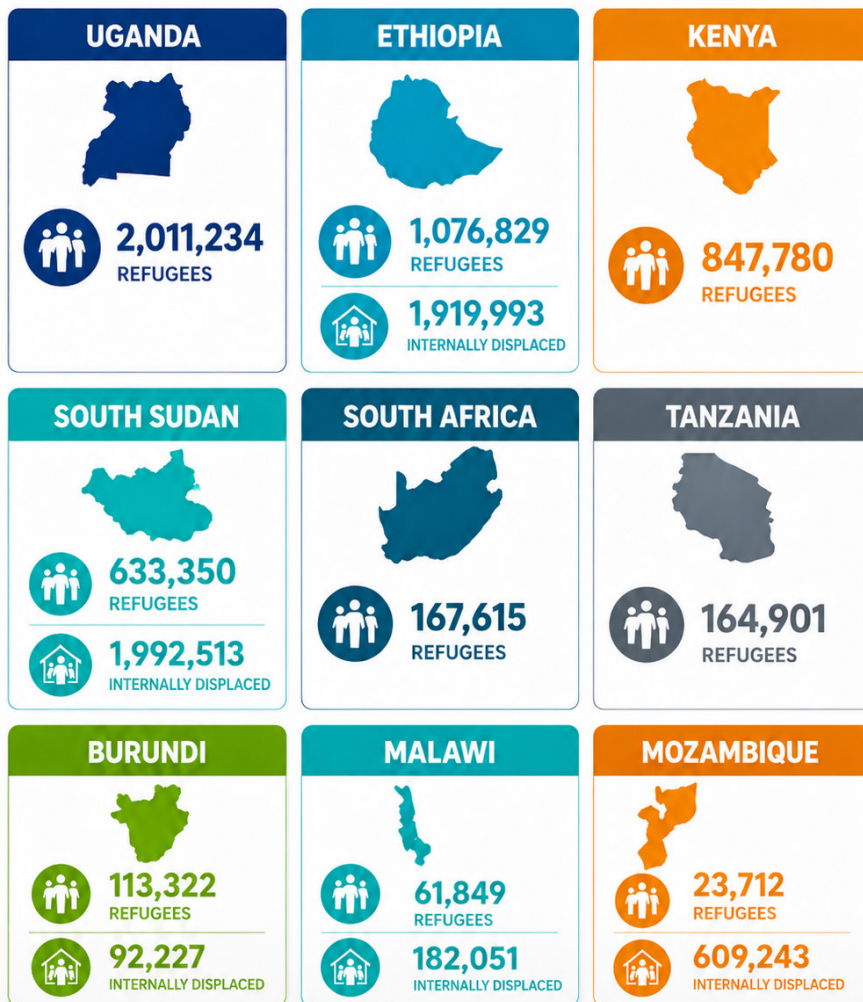
##### LEGAL BARRIERS FOR EMPLOYMENT:

refugees in many countries face legal barriers to employment, limiting their self-reliance and integration opportunities.

## DISTRIBUTION PER COUNTRY



At the national level, our countries of operation host refugees & asylum seekers and internally displaced as follows:



1



#### ARMED CONFLICT AND INSECURITY

- Violence remains the leading cause of forced displacement in several countries.

- Ongoing conflicts in Sudan, South Sudan, Democratic Republic of the Congo, Somalia, and parts of Ethiopia have displaced millions.

2



#### CLIMATE CHANGE AND ENVIRONMENTAL SHOCKS

- Climate-related disasters are increasingly driving displacement across the region.

- Severe droughts in the Horn of Africa affect livelihoods, food security, and water access.

- Flooding and cyclones frequently affect countries such as Mozambique, Malawi.

3



#### FOOD INSECURITY AND POVERTY

- Economic hardships often combine conflict and climate shocks.

- Rising food prices, unemployment, and weak social protection systems increase vulnerability.

4



#### POLITICAL INSTABILITY AND GOVERNANCE CHALLENGES

- Weak governance structures fuel displacement.

- Human rights abuses, political repression, and limited state protection can trigger refugee flows.

# PROGRAMMES

MAIN ACTIVITIES AND IMPACTS OF 2025

## EDUCATION

# 114,713

WERE SERVED IN EDUCATION

Advance access to quality education of forcibly displaced people by upholding the right to recognition in national education systems, and prioritizing teacher formation and alternative education pathways, especially for girls and other marginalised groups.

### STRATEGIC SERVICES

# 01

#### EDUCATION ACCESS:

Access to early childhood development and primary, secondary and tertiary education.

# 02

#### EDUCATION QUALITY:

Teacher professional development, education material supply, measurement of learning outcomes and community engagement.

# 03

#### EDUCATION WELLBEING:

Social emotional Learning, Mental health and psychosocial support, Menstrual Hygiene Management (MHM) Positive parenting and child protection and safeguarding.

# 04

#### EDUCATION SYSTEMS:

Coordination with government and other stakeholders, school governance structures, disaster risk reduction and advocacy.

## MHPSS / PROTECTION

# 55,635

WERE SERVED IN MHPSS / PROTECTION

Improve Protection, mental health and psychosocial wellbeing of forcibly displaced people by prioritizing community-based and community led initiatives.

### STRATEGIC SERVICES

# 01

#### MHPSS TRAINING:

Trainings on MHPSS guidance and tools

# 02

#### BASIC SERVICES:

Protection networks and assistance

# 03

#### COMMUNITY AND FAMILY SUPPORT:

Safe spaces, social-emotional and psychoeducation support.

# 04

#### NON-SPECIALISED SUPPORT:

Psychological interventions and case management.

# 05

#### SPECIALISED SERVICE REFERRALS:

To specialised mental health services.

# 06

#### GBV PREVENTION SERVICES.

This is combined with group and individual counselling for GBV survivors.

# 07

#### CHILD PROTECTION SERVICES

for unaccompanied minors through activities such as foster care arrangements, child care for children with special needs, rehabilitation services referrals, and resettlements.

# 08

#### ADVOCACY ACTIVITIES

to defend the rights of the forcibly displaced people.

# 09

#### REFERRALS

to other NGOs for specific vulnerable cases.

## LIVELIHOOD

# 13,917

WERE SERVED IN LIVELIHOOD

Catalyse the economic inclusion of forcibly displaced people by investing in pathways to decent work, adopting a market-systems approach, and expanding equitable access.

### STRATEGIC SERVICES

# 01

#### EMPLOYMENT SERVICES:

(Vocational/professional training for skilled trade occupations and digital skills)

# 02

#### BUSINESS DEVELOPMENT:

(Business development services and financial Access)

# 03

#### MARKET ENGAGEMENT:

(Partnerships with local and state government, Market analysis and linkages, Value chain development).

# 04

#### AGRICULTURE & LIVESTOCK:

(Agribusiness development and climate-smart farming)

## RECONCILIATION

# 7,723

WERE SERVED IN RECONCILIATION

Contribute to the transformation of relationships between individuals and groups that have been damaged by violence and conflict at communal, cultural and structural levels, facilitating safe spaces to seek non-violence, justice, and peace.

### STRATEGIC SERVICES

# 01

#### CAPACITY BUILDING:

Peace and justice trainings to staff and community members.

# 02

#### JUSTICE & CONFLICT TRANSFORMATION:

Interfaith dialogues, communal awareness and advocacy.



PEOPLE SERVED  
BY 2025:

# 211,489

# PROGRAMMES

MAIN ACTIVITIES AND IMPACTS OF 2025

## ADVOCACY

**4,327**  
WERE SERVED IN ADVOCACY

Connect JRS local, regional and advocacy processes that challenge unjust legal frameworks, strive to change public opinion, help to generate sustainable and durable solutions, and empower forcibly displaced people to exercise their

### STRATEGIC SERVICES

- 01** | **STRATEGY & CAPACITY:**  
Local staff and community capacity on advocacy.
- 02** | **POLICY & RESEARCH:**  
Research to produce evidence for advocacy.
- 03** | **PARTNERSHIPS & CAMPAIGNS:**  
Coordinated advocacy campaigns.

## IMPACT

SUCCESS STORIES IN THE REGION



#### WITNESSING CHANGE THROUGH EDUCATION

A story of how education transformed lives and opened doors to hope, dignity and a brighter future.

[READ THE FULL STORY](#)



#### EDUCATION AS HOPE FOR THE COMMUNITY

How access to quality education is restoring hope and building a better future for entire communities.

[READ THE FULL STORY](#)



#### FROM EXILE TO ACADEMIC EXCELLENCE

The remarkable journey of a refugee student who overcame challenges to achieve academic excellence.

[READ THE FULL STORY](#)



#### SCHOOL ENTREPRENEURSHIP IN THE SERVICE OF EDUCATION

Empowering school clubs with entrepreneurial skills to drive change and support education in their communities.

[READ THE FULL STORY](#)

## BASIC NEEDS

**15,174**

PEOPLE RECEIVED BASIC NEEDS ASSISTANCE AND SERVICES

Basic Needs programming provides life-saving assistance and essential services that ensure survival and maintain human dignity during displacement.

### OUR BASIC NEEDS SUPPORT INCLUDES:

- 01** | **FOOD SECURITY**  
Providing nutritious food to meet immediate hunger and prevent malnutrition.
- 02** | **SHELTER ASSISTANCE**  
Providing safe and adequate shelter and essential items for protection and privacy.
- 03** | **WATER, SANITATION AND HYGIENE (WASH) SERVICES**  
Ensuring access to clean water, sanitation facilities, and hygiene supplies to prevent disease and promote dignity.
- 04** | **PRIMARY HEALTH CARE SERVICES**  
Providing essential health care services to treat illness, prevent disease, and support community well-being.

**05** | **PASTORAL CARE**  
**11,239**  
PEOPLE SERVED



Offering spiritual and emotional support to bring comfort, hope, and strength.



SCAN TO SEE MORE OF OUR IMPACT



Regional Director: [esar.director@jrs.net](mailto:esar.director@jrs.net)